

2019 KS2 School Dashboard

for governors & school leaders

Produce custom dashboards
at fftaspire.org

Derwent Vale Primary and Nursery School

LA Cumbria DFE 9092707 Produced October 2019 Version 1

What it is

Seven easy-to-use reports that help governors and school leaders to evaluate school performance using the latest 2019 DFE school performance indicators.

What it tells you

- What are the strengths and areas for improvement in your school?
- How does attainment and pupil progress compare to the national average over the last three years?
- How are you performing in different subjects?
- Do you have any under-performing groups of pupils?
- How might the context of your school affect performance?
- How does pupil attendance compare to the national average?

About the data shown

1 2 3

Actual results

Actual results for your school, using a range of measures such as averages and thresholds.



Gauges

These display headline indicators and whether actual results and pupils' progress are in line with, or significantly above or below, the national average.

ESTIMATED ↔ 1 2 3

Pupil progress

The value added progress that your pupils have made from one key stage to the next. FFT compares your actual results to the estimated results based on the progress of similar pupils nationally.



Statistical significance

Green plus signs and red minus signs highlight where either actual results or pupils' progress is significantly above or below the national average.



Trends

The dashboard analyses school performance over 3-5 years. Any significant year-on-year improvement is highlighted using an up arrow. Significant declines in performance are highlighted with a down arrow.



Strengths & weaknesses

These highlight key pupil groups and subjects where progress is above or below the national average.

Working in partnership with



Data sources

Generated from FFT Aspire which includes data sourced from the DfE (National Pupil Database) and data calculated by FFT. FFT is accredited as a DfE supplier to receive early access to ASP data. Headline performance indicators will be consistent with the DfE School Performance Tables and ASP.

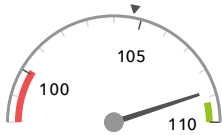
Overview

KS2 Attainment 2019 · Actual results

12 pupils

Average Scaled Score (Re, Ma)

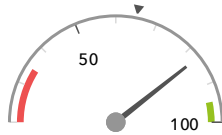
108.8



In line with the national average (104.7) ◀

% Expected standard+ (Re, Wr, Ma)

83%



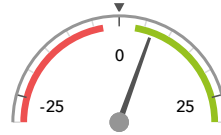
In line with the national average (65%) ◀

KS2 Progress 2019 · Value Added

12 matched pupils

Average Scaled Score (Re, Ma)

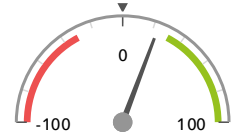
+6.6 +



Significantly above the national average (0) ◀

% Expected standard+ (Re, Wr, Ma)

+23%



In line with the national average (0%) ◀

KS2 higher and lower performing pupil groups 2019

	Higher performing	Lower performing
Overall achievement pupil progress	Female (6) + Middle attainers (8) + Not FSM (ever) (9) +	
KS2 reading achievement pupil progress	Female (6) + Middle attainers (8) + Not FSM (ever) (9) +	
KS2 writing achievement pupil progress	Female (6) Middle attainers (8) Not FSM (ever) (9)	
KS2 mathematics achievement pupil progress	Not FSM (ever) (9) + Not FSM (in last 6 years) (9) + Female (6) + ↓	
KS2 grammar, punctuation & spelling achievement pupil progress	Middle attainers (8) + Female (6) Not FSM (ever) (9) +	

Attainment & progress

KS2 Attainment 2019

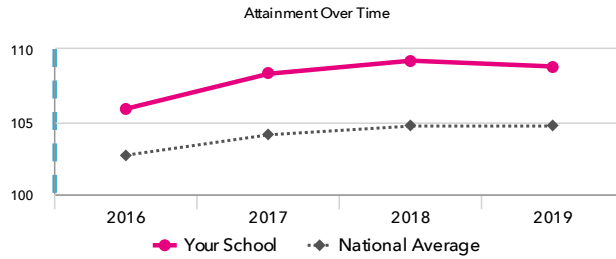
12 pupils

Average Scaled Score (Re, Ma)

108.8



In line with the national average (104.7)



KS2 Progress 2019

12 matched pupils

Average Scaled Score (Re, Ma)

+6.6+



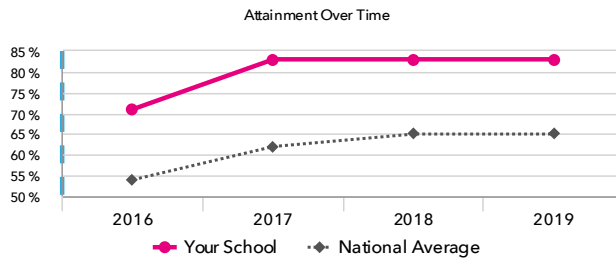
Significantly above the national average (0)

% Expected standard+ (Re, Wr, Ma)

83%



In line with the national average (65%)



% Expected standard+ (Re, Wr, Ma)

+23%



In line with the national average (0%)

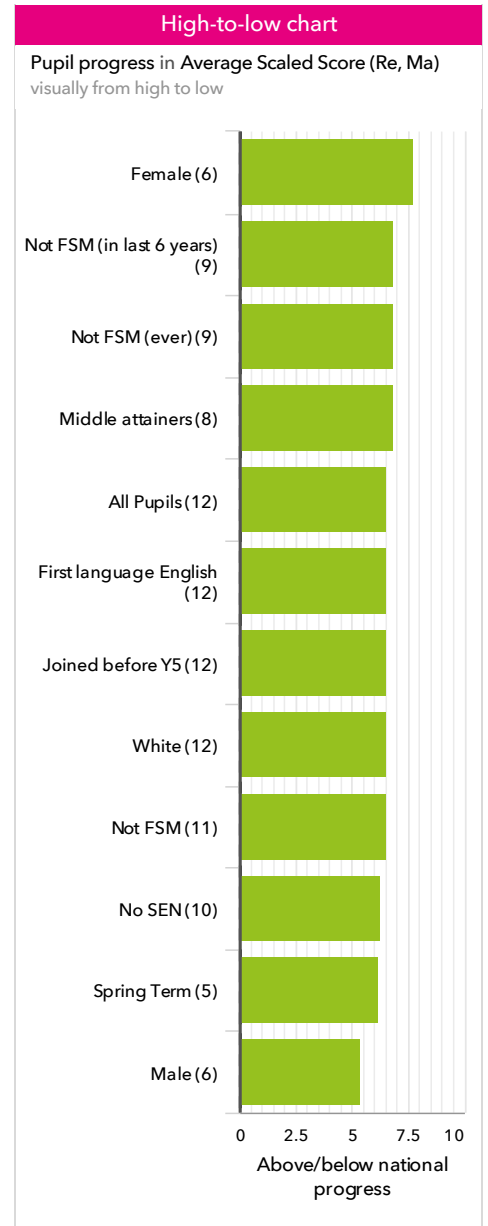
KS2 performance summary

	Actual results			Pupil progress		
	2017	2018	2019	2017	2018	2019
Number of Pupils / % Matched	18	12	12	100%	100%	100%
% Expected standard+ (Re, Wr, Ma)	83%	83%	83%	+33%+	+28%	+23%
% Higher standard (Re, Wr, Ma)	11%	8%	8%	+1%	+5%	+5%
Average Scaled Score (Re, GPS, Ma)	108.9+	110.0+	108.7	+7.2+	+8.3+	+6.1+
Average Scaled Score (Re, Ma)	108.3+	109.2+	108.8	+6.9+	+7.5+	+6.6+
% Expected standard+ Reading	89%	92%	92%	+28%+	+23%	+24%
% Higher standard Reading	50%+	25%	42%	+27%+	+5%	+25%+
Scaled Score Reading	108.4+	107.4	108.8	+7.2+	+5.4+	+6.9+
% Expected standard+ Writing	83%	83%	83%	+19%	+10%	+9%
% Higher standard Writing	17%	25%	17%	-0%	+12%	+9%
Scaled Score Writing	102.7	103.5	102.7	+3.6+	+3.9+	+2.6
% Expected standard+ Maths	89%	100%	83%	+24%+	+32%+	+10%
% Higher standard Maths	61%+	67%+	67%+	+38%+	+55%+	+46%+
Scaled Score Maths	108.2+	110.9+	108.8	+6.6+	+9.6+	+6.2+
% Expected standard+ Grammar, Punctuation & Spelling	89%	92%	83%	+24%+	+20%	+11%
% Higher standard Grammar, Punctuation & Spelling	72%+	67%+	50%	+45%+	+42%+	+27%
Scaled Score Grammar, Punctuation & Spelling	110.9+	110.9	108.2	+8.0+	+8.2+	+4.7+
% Expected standard+ Science	94%	83%	83%	-	-	-

Pupil groups

KS2 Pupil groups performance 2019

	Pupils	Actual results			Pupil progress			
		Average Scaled Score (Re, Ma)	% Expected standard+ (Re, Wr, Ma)	% Higher standard (Re, Wr, Ma)	Average Scaled Score (Re, Ma)	% Expected standard+ (Re, Wr, Ma)	% Higher standard (Re, Wr, Ma)	
Summary	All Pupils	12	108.8	83%	8%	+6.6 ⁺	+23%	+5%
Gender	Male	6	109.3	83%	17%	+5.4 ⁺	+13%	+12%
	Female	6	108.3	83%	0%	+7.7 ⁺	+34%	-2%
DFE Prior Attainment	Higher attainers	2	112.3	100%	0%	+3.8	+11%	-9%
	Middle attainers	8	110.8 ⁺	100% ⁺	13% ⁺	+6.9 ⁺	+34%	+10%
	Lower attainers	2	97.8	0%	0%	+7.9	-6%	-0%
Pupil Premium	FSM (in last 6 years)	3	105.8	67%	0%	+5.5	+16%	-3%
	Not FSM (in last 6 years)	9	109.8	89%	11%	+6.9 ⁺	+26%	+8%
FSM	FSM	1	109.0	100%	0%	+6.8	+43%	-1%
	Not FSM	11	108.8	82%	9%	+6.5 ⁺	+22%	+6%
FSM Ever	FSM (ever)	3	105.8	67%	0%	+5.5	+16%	-3%
	Not FSM (ever)	9	109.8	89%	11%	+6.9 ⁺	+26%	+8%
Term of Birth	Autumn Term	4	111.3	100%	0%	+7.2	+40%	-4%
	Spring Term	5	108.2	80%	0%	+6.2 ⁺	+18%	-3%
	Summer Term	3	106.7	67%	33%	+6.3	+9%	+30%
SEN Group	SEN Support	2	97.8	0%	0%	+7.9	-6%	-0%
	No SEN	10	111.1 ⁺	100%	10%	+6.3 ⁺	+29%	+6%
EAL	First language English	12	108.8	83%	8%	+6.6 ⁺	+23%	+5%
Mobility	Joined before Y5	12	108.8 ⁺	83%	8%	+6.6 ⁺	+23%	+5%
Ethnicity	White	12	108.8	83%	8%	+6.6 ⁺	+23%	+5%



Subjects

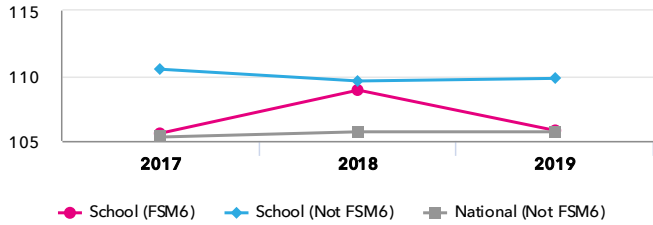
KS2 subject performance 2019

	Actual results			Pupil progress			Actual results over time		
	2017	2018	2019	2017	2018	2019			
Number of Pupils / % Matched	18	12	12	100%	100%	100%			
Reading									
% Expected standard+	89%	92%	92%	+28% +	+23%	+24%			
% Higher standard	50% +	25%	42%	+27% +	+5%	+25% +			
Scaled Score	108 +	107	109	+7.2 +	+5.4 +	+6.9 +			
Writing									
% Expected standard+	83%	83%	83%	+19%	+10%	+9%			
% Higher standard	17%	25%	17%	-0%	+12%	+9%			
Scaled Score	103	104	103	+3.6 +	+3.9 +	+2.6			
Maths									
% Expected standard+	89%	100%	83%	+24% +	+32% +	+10%			
% Higher standard	61% +	67% +	67% +	+38% +	+55% +	+46% +			
Scaled Score	108 +	111 +	109	+6.6 +	+9.6 +	+6.2 +			
Grammar, Punctuation & Spelling									
% Expected standard+	89%	92%	83%	+24% +	+20%	+11%			
% Higher standard	72% +	67% +	50%	+45% +	+42% +	+27%			
Scaled Score	111 +	111	108	+8.0 +	+8.2 +	+4.7 +			
Science									
% Expected standard+	94%	83%	83%	-	-	-			

Disadvantaged pupils

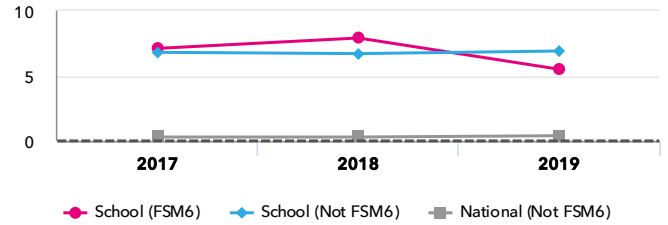
KS2 attainment for disadvantaged pupils 2019

Average Scaled Score (Re, Ma)



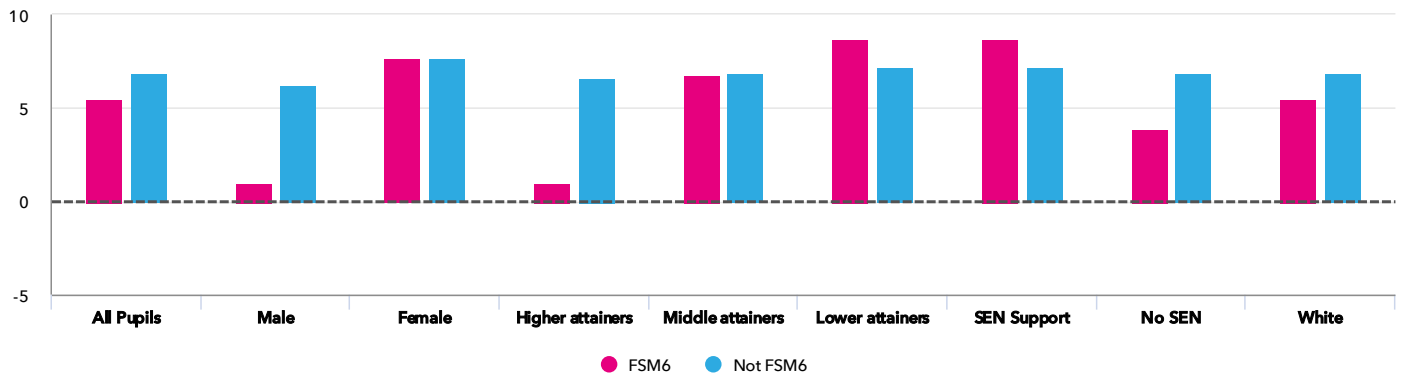
KS2 progress for disadvantaged pupils 2019

Average Scaled Score (Re, Ma)



Progress gap

Average Scaled Score (Re, Ma)

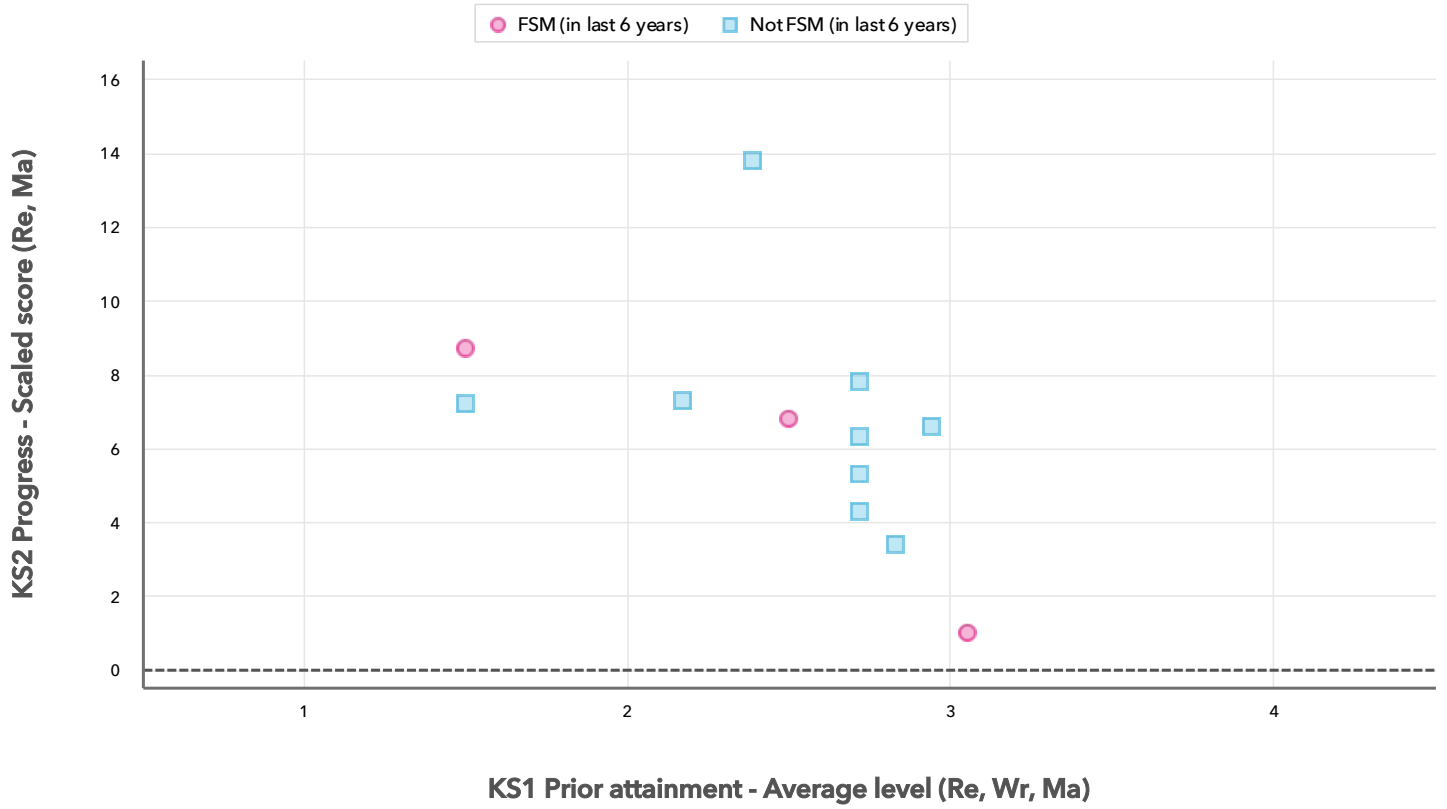


Attainment & progress

Pupils	Attainment			Progress					
	FSM6	Not FSM6	Average Scaled Score (Re, Ma)			FSM6	Not FSM6	Gap	
			FSM6	Not FSM6	Gap				
Summary	All Pupils	3	9	105.8	109.8	-4	5.5	6.9 +	-1.4
Gender	Male	1	5	110	109.2	0.8	1	6.2	-5.2
	Female	2	4	103.8	110.6	-6.8	7.7	7.7	0
DFE Prior Attainment	Higher attainers	1	1	110	114.5	-4.5	1	6.6	-5.6
	Middle attainers	1	7	109	111	-2	6.8	6.9	-0.1
	Lower attainers	1	1	98.5	97	1.5	8.7	7.2	1.5
SEN Group	SEN Support	1	1	98.5	97	1.5	8.7	7.2	1.5
	No SEN	2	8	109.5	111.4	-1.9	3.9	6.9	-3
Ethnic Group	White	3	9	105.8	109.8	-4	5.5	6.9	-1.4

Scatterplot

KS2 Pupil scatterplot 2019 12 pupils highlighted by Pupil Premium



Context

Context - Year 6

		Pupils	Comparative profile 2018 / 2019		Absence during Key Stage 2		Persistent absence during Key Stage 2	
		School	School	National	School	National	School	National
Summary	All Pupils	12	100%	100%	-	-	-	-
Gender	Male	6	50%	51%	-	-	-	-
	Female	6	50%	49%	-	-	-	-
DFE Prior Attainment	Higher attainers	2	17%	32%	-	-	-	-
	Middle attainers	8	67%	54%	-	-	-	-
	Lower attainers	2	17%	8%	-	-	-	-
Pupil Premium	FSM (in last 6 years)	3	25%	30%	-	-	-	-
	Not FSM (in last 6 years)	9	75%	70%	-	-	-	-
FSM	FSM	1	8%	16%	-	-	-	-
	Not FSM	11	92%	84%	-	-	-	-
FSM Ever	FSM (ever)	3	25%	30%	-	-	-	-
	Not FSM (ever)	9	75%	70%	-	-	-	-
Term of Birth	Autumn Term	4	33%	33%	-	-	-	-
	Spring Term	5	42%	33%	-	-	-	-
	Summer Term	3	25%	34%	-	-	-	-
SEN Group	SEN Support	2	17%	15%	-	-	-	-
	No SEN	10	83%	82%	-	-	-	-
EAL	First language English	12	100%	79%	-	-	-	-
Mobility	Joined before Y5	12	100%	93%	-	-	-	-
Ethnicity	White	12	100%	74%	-	-	-	-